



[www.treetechnique.com](http://www.treetechnique.com)

---

We operate experienced tree surgery teams across a wide range of Arboricultural services throughout Wiltshire and the surrounding counties of Berkshire, Dorset, Hampshire, Gloucestershire, Oxfordshire and Somerset.

Our comprehensive tree services include complex dismantling and felling, crown reductions and reshaping, crown lifting, risk management of deadwood, selective pruning, crown thinning, pollarding, veteran tree management and removal of hazardous trees including Ash dieback projects. As well as stump grinding, site clearance works, roadside clearance, emergency call-out and storm response, tree planting and young tree maintenance.





## STANDARDS

Our highly skilled operational arboriculturists perform tree work as a team and in accordance with British Standard BS:3998:2010 tree work recommendations and current industry standards.

## INSURANCE

All our work is fully insured. We hold £5 million Public Liability Insurance and £10 million Employers' Liability Insurance.

## SAFETY

Safety is another core value we uphold at all times and we risk-assess our work dynamically with site specific risk assessments ensuring the correct health and safety of our staff, the Client and the public at all times. Where needed site-specific method statements are also undertaken. This ensures that our sites run smoothly and effectively at all times through good on-site communication and management from the start to completion.





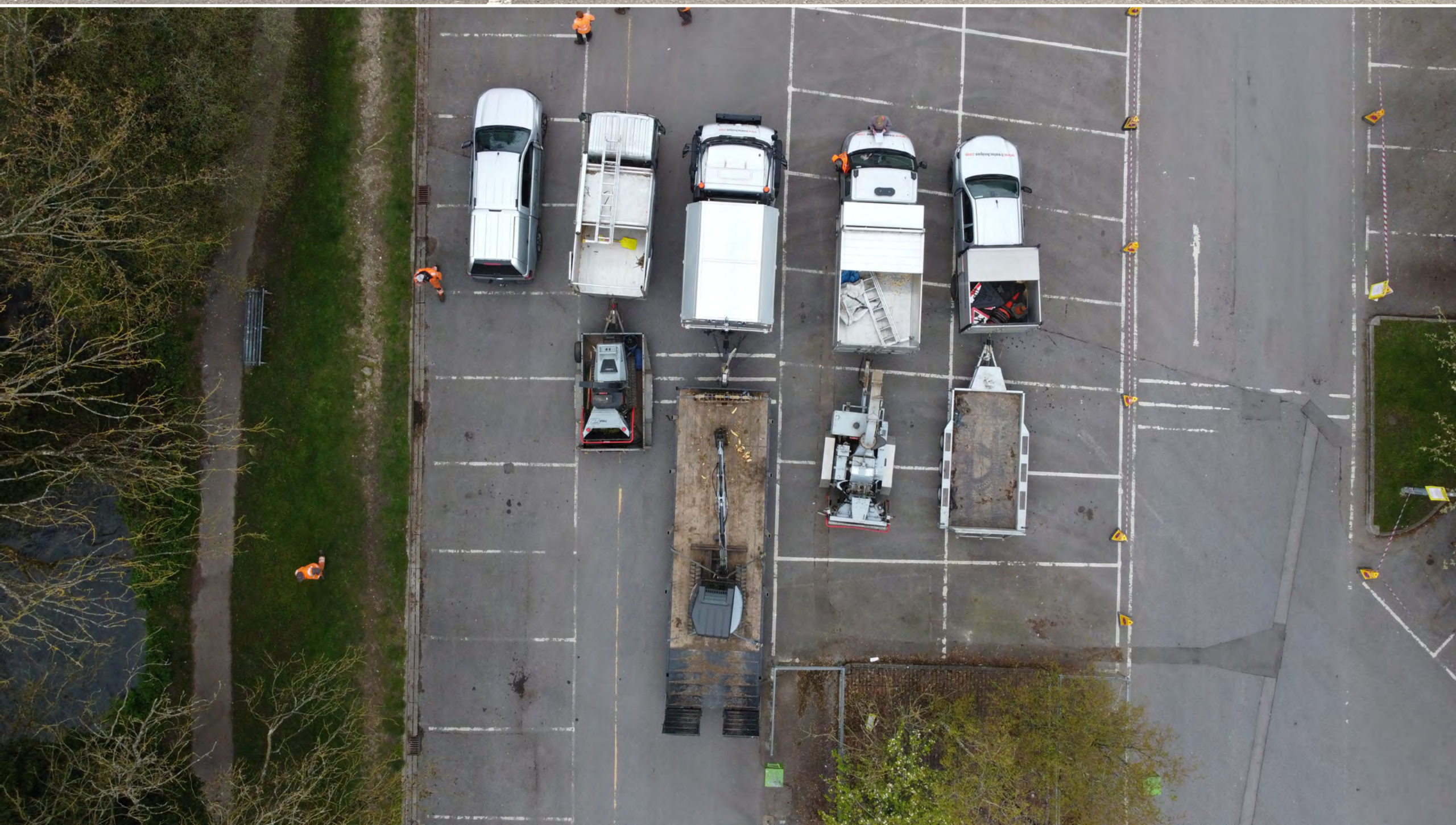


## STAFF AND TRAINING

Our permanently employed staff are our greatest asset. We upscale our services by combining teams to perform larger projects with our existing resource of fully trained personnel. Our staff hold a wide range of arboricultural qualifications in all elements of tree work with NPTC and Lantra certificates. We are dedicated to every aspect of tree care and seek to innovate, improve and develop our practices continuously.

## EQUIPMENT AND MACHINERY

We have a wide range of machinery and equipment including a Unimog, tipper trucks, a grain trailer, a pickup, tracked and towable chippers from 6 to 12 inches and a stump grinder to deliver effective and efficient tree services. All our tree teams are fully kitted out with the latest climbing, rigging and safety equipment needed to carry out a high standard of work safely and these are maintained through following LOLER and PUWER requirements.



## REPUTATION

We have a long-standing positive reputation gained since our establishment in 2003 and incorporated in 2006. We pride ourselves on our ever-increasing reputation and client base, with a large proportion of our work now being for commercial sources.



## CLIENTS

We have experience working for the Ministry Of Defence, Government Agencies, County Councils, Local Authorities, Parish and Town Councils, Insurance Companies, Grounds Maintenance Companies, Environmental Organisations, large private estates, Schools, and Property developers, housing associations and property management companies.

## COMPLIANCE

With experienced owner-led management, positive processes and procedures are embedded within our company policies. This ensures we offer excellent value for money services whilst at the same time ensuring the well-being of our staff, and high standards of working practices. We ensure that projects are fully assessed at the start to ensure compliance with all legal and statutory legislation around tree work, ecology and wildlife.

## ACCREDITATIONS

We have a proven track record within the Arboricultural industry of over 20 years which is recognised through our Arboricultural Association Approved Contractor Status, Trustmark accreditation, buy with confidence and CHAS certification confirming our competency and high quality of work.



## SUSTAINABILITY

Sustainable practices are our focus and we are able to recycle over 99% of all the by-products of tree surgery. We have a dedicated timber yard where we store our green waste products for sorting and processing. Our wood chip is predominately sent for biomass or composted for mulch and timber is used for firewood, biomass or wood products. We are registered with the Environment Agency as Waste Carriers.

Telephone: **01980 626 353** or Mobile: **07780 003 575**

Email: **info@treetechnique.com**

Tree Technique Ltd, Longacre, Firsdown, Salisbury SP4 6DT

Company number 06028286 © All rights reserved 2023